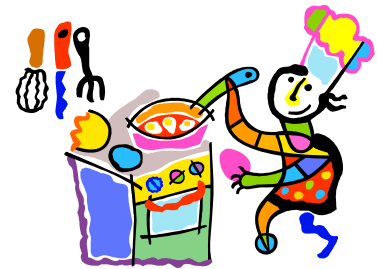


The GSL Closet

To Annoyed Parties (of which there should be none)

- If this closet is a mess, smells, or is otherwise causing a problem, contact chihyu@csail.mit.edu and it will be taken care of promptly. Our apologies for the inconvenience.



To GSL Participants

- **CLEAN UP:** If the above happens, the GSL Czarina will kick your butt (unless Sheila finds you first, in which case there may not be a butt left to kick)
- **NO LEFTOVERS:** Do not leave leftover or opened food items here. If it will spoil or spill in anything less than 1 year, give or throw it away. Also, do not use any local floor's refrigerator.
- **KEEP THE NOISE DOWN** when accessing the closet.
- And most importantly: Cook us some good eats!

